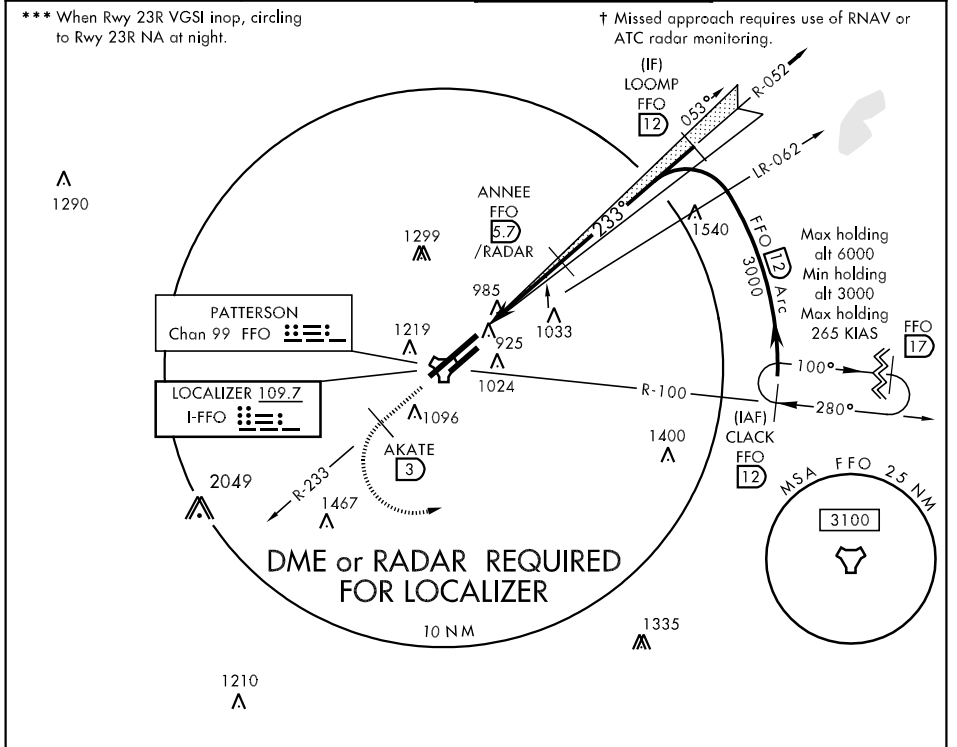


LOC I-FFO 109.7	APCH CRS 233°	Rwy Idg 12,600 THRE 823 Arpt Elev 823	AL-108 [USAF]	WRIGHT-PATTERSON AFB (KFFO)
▼ **When ALS inop, increase RVR to 40 and vis to ¼ mile. **When ALS inop, increase CAT AB RVR to 50 and vis to 1 mile, CAT C RVR to 60 and vis to 1¼ miles, CAT D vis to 1½ miles, CAT E vis to 1¾ miles.			ALSF-1 	† MISSED APPROACH: Climb via FFO R-233 to 2000, at 3 DME turn left direct CLACK to 3000 and hold.

ATIS 124.475 269.9	COLUMBUS APP CON 126.5 327.125	PATTERSON TOWER 126.9 281.45	GND CON 121.8 335.8
------------------------------	--	--	-------------------------------



EC-2, 08 MAR 2012 to 05 APR 2012

EC-2, 08 MAR 2012 to 05 APR 2012

EMERG SAFE ALT 100 NM 3300					ELEV 823	
2000 FFO R-233	AKATE FFO 3	3000	CLACK R-100 12 6000 3000	LOOMP R-050 12	233° 4.1 NM from FAF	
TACAN	GENIE 2.1	ANNIE 5.7 /RADAR	ANNIE to RW23R GS 3.00° TCH 50	3000	1043 A 839 P 819 P THRE 823 904 A 1132 A 7000 x 150 977 A 980 A	
.5 NM		3.6 NM				
CATEGORY	A	B	C	D	E	
S-ILS 23R *	1023/24		200	(200-½)		
S-LOC 23R **	1320/24	497 (500-½)	1320/40 497 (500-¾)	1320/50 497 (500-1)	1320/60 497 (500-1¼)	
CIRCLING ***	1380-1 557 (600-1)	1400-1 577 (600-1)	1420-1½ 597 (600-1½)	1460-2 637 (700-2)	1620-2¾ 797 (800-2¾)	HIRL Rwy 5L-23R MIRL Rwy 5R-23L